



MULTICAT KRVE 86

The Multicat KRVE 86 is at your disposal for a highly diverse range of activities on the water. The ship is rented out including skipper.

✓ OFFSHORE OPERATIONS
MAINTENANCE WORK
REPAIRS
DIVING ACTIVITIES
ANCHOR HANDLING

✓ SEAWORTHY

✓ HOSES AND FENDERS

✓ STORES / SUPPLIES

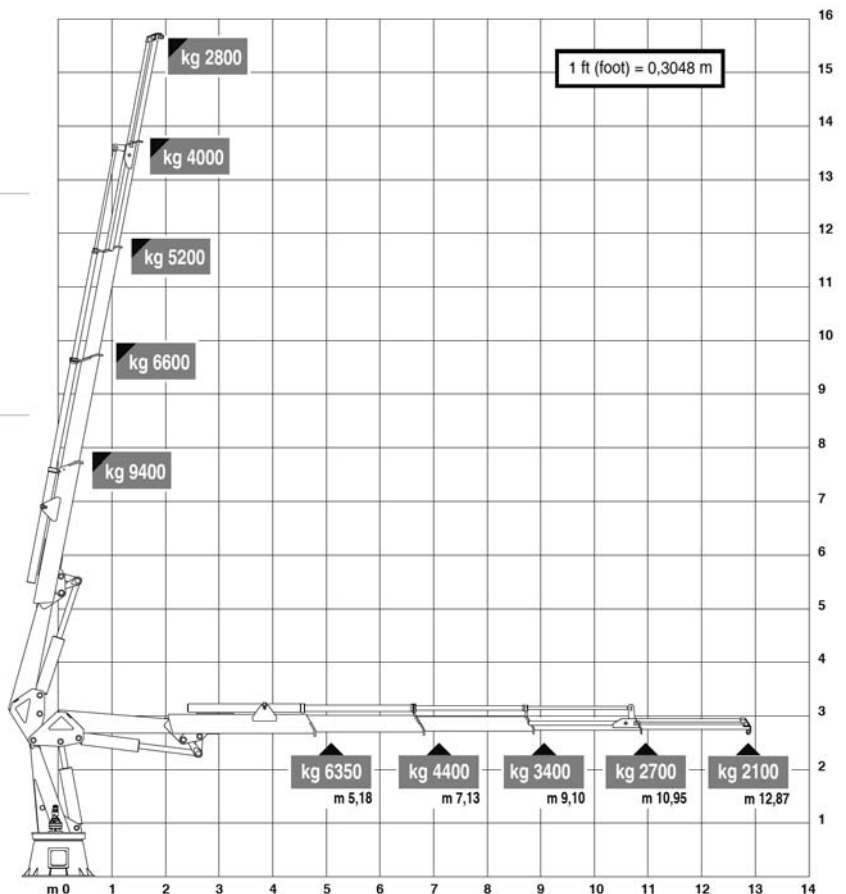


Rental rates are available on request via
86@krve.nl or +31 (0)88 11 33 000



Both a flagship and a workhorse! KRVE 86 is the ideal workboat to supply ships with provisions, pipes and fenders. The vessel can be used as a maintenance and repair ship. Also ideal for diving operations and performing repairs to the anchor. KRVE 86 can quickly be on location to perform the desired tasks.

Inquire about the possibilities and the rental fees.



Above is a schematic representation of the lifting powers of the crane when retracted and when fully extended.

MULTICAT **KRVE 86**



TECHNICAL DATA

Year of construction: 2016

Light displacement: about 85 m³

Length: 22.50/22.42 m

Width: 6.00 m

Max. draught (keel): 1.92 m

Moulded depth: 1.50 m

Freeboard relative to empty draught:

± 6 m (with lowered navigation mast)

- Merwelds Multicat, classification by Bureau Veritas, coastal waters and inland waterways, Dutch flag
- Propulsion: two John Deere diesel engines CCR 2
- Bollard pull 12 tonnes
- Two generators 60 and 30 KW 220/380 volt
- Bow thruster 30 kW
- Inland navigation radar
- Marine Radar

ANCILLERY DECK EQUIPMENT

Working deck:

- Hydraulic crane with a telescopic boom with a maximum length of 12.80 metres
- Hydraulic crane capable of lifting 9400 kg alongside the ship and 2100 kg fully extended
- Hydraulic clamp to secure steel wires or bunches
- Anchor winch SB at bow
- Two hydraulic coupling winches for attaching to a push barge
- Hydraulic capstand
- Hydraulic tugger winch with a capacity of 10 tonnes
- Hot water steam cleaner
- Every conceivable power supply 380/220 volt
- Heated deck

Aft:

- Anchor winch
- Toilet
- Shower

STEERING SYSTEM

General:

The vessel is equipped with two rudders with heels, controlled by means of two hydraulic cylinders which are mutually connected through a coupling rod.

Steering apparatus:

The main propulsion is effected by means of two hydraulic pumps driven by the main engines (PTO shaft at the bow). Backup power is supplied by means of a 24V pump and a hand pump.

ELECTRICAL SYSTEM

General:

- 400/230 V system for steering gear power, lighting and equipment
- 24 V system for emergency lighting and nautical equipment
- 24 V for starting engines

FIREFIGHTING AND SAFETY EQUIPMENT

Firefighting equipment:

- A fire extinguishing system in the engine room, with control and monitoring system in the wheelhouse
- Two fire hose cabinets with fire hose and nozzle: one at the railing of the stern and one in the aft engine room
- Several fire extinguishers (according to regulations)

Rescue and safety equipment:

- Self-inflatable life jackets
- Various lifebuoys according to regulations
- Two 6-person life rafts at the railing of the stern



KRVE
86



MULTICAT **KRVE 86**



OFFSHORE OPERATIONS
MAINTENANCE WORK
REPAIRS
DIVING ACTIVITIES
ANCHOR HANDLING



SEAWORTHY



HOSES AND FENDERS



STORES / SUPPLIES

+31 (0)88 11 33 000

Rental rates are available on request via 86@krve.nl or +31 (0)88 11 33 000